

Canon



imageRUNNER

ADVANCE

4045/4035/4025



User-Centric

Shift in Focus: from Technology-Driven to Customer-Driven

Canon proudly presents the imageRUNNER ADVANCE Series, in pursuit of the industry's easiest-to-use, most user-friendly, and highest-performing digital multifunctional solutions.

Simplest-to-use and fastest-to-deploy, these models allow anyone to use its features with ease and confidence.

It's a shift away from the technology-driven approach to an innovative customer-driven approach.

Yet another new horizon just dawned.



imageRUNNER ADVANCE

The new standard for black-and-white devices, capable of responding to a wide range of office needs.



4045/4045F

- Continuous copy speed45 ppm
- First Copy Output Time (FCOT)3.8 sec.
- Scan speed (A4, landscape, at the resolution of 300 dpi)
- Color51 ipm
- Black and white51 ipm

* When the optional Cassette Feeding Unit-AF1, Booklet Finisher-G1, Buffer Path Unit-H1, External 2 Hole Puncher-B2, and Paper Deck Unit-B2 are attached.



4035/4035F

- Continuous copy speed35 ppm
- First Copy Output Time (FCOT)3.8 sec.
- Scan speed (A4, landscape, at the resolution of 300 dpi)
- Color51 ipm
- Black and white51 ipm

* When the optional Cassette Feeding Unit-AF1, Inner Finisher-D1, and Inner Finisher Additional Tray-A1 are attached.



4025/4025F

- Continuous copy speed25 ppm
- First Copy Output Time (FCOT)5.2 sec.
- Scan speed (A4, landscape, at the resolution of 300 dpi)
- Color51 ipm
- Black and white51 ipm

* When the optional Cassette Feeding Unit-AF1, and Inner 2 Way Tray-H1 are attached.

Ease of use means greater work convenience

Universal design delivers ease of use to everyone. The core of this design is a full-color, large and legible user interface. You can customize the display to show only required functions, saving the settings for simple one-touch operation. Ease of use makes work a pleasure.



Real ease of use extends to daily maintenance

Toner replacement and paper supply are now stress-free because of the design. You can realize the improved usability in daily office work.

Improved fax work efficiency leads to cost savings

Paper-based fax work has been troublesome both in sending and receiving. Simply introducing paperless fax operation helps you achieve an efficiency and cost reduction.



A black-and-white device offering full-color digitization of a variety of data

Both digital and paper documents are required to take advantage of the wide range of information in the entire office. This black-and-white device supports full-color scan functions and hard-disk space in the main unit (Advanced Box) as a standard function. In addition, it can create a variety of easy-to-use PDF files that suit a range of purposes.

Multiple device cooperation improves efficiency and reduces costs

Cooperation among devices allows you to streamline work operations and reduce the cost of equipment deployment, cable laying, etc. For example, you can use one fax-equipped device to perform fax functions for devices without fax capability. In addition, the iR-ADV series' unified design symbolizes integrity, with features such as the base color of cashmere beige, Round Square, etc.

Environmentally friendly manufacture ensures safety

On the themes of "conserving resources" and "preventing global warming and conserving energy," Canon is committed to promoting environmentally friendly practices such as low-power consumption, CO₂ reduction, use of bio-based plastics, etc. Meeting various environmental standards, Canon multifunctional devices can be used with total confidence.

PICK UP!

Responding meticulously to a wide

01 Large, legible and accessible user interface



Large-screen 8.4-inch full-color TFT LCD touch panel

Efficient operation is available with just a stroke of the user-friendly touch panel screen. The Main Menu can be customized to display only certain functions or a sequence of buttons reflecting frequency of use.

Quick Menu simplifies operation even further

Frequently used functions, such as 2 on 1/2-sided copy and Compact PDF scan, can be combined and registered for individual users. The target job can be performed with one-touch control. In addition, each user can customize the menu display, coordinating with user authentication system.



02 Easy for installation and maintenance

Space-saving design increases freedom of layout

Succeeding the popularity of compact iR-ADV2030 series, this device has a space-saving 565mm-wide design. In addition, the slim design with almost-flat sides and back panels allows you to take full advantage of the office space. With even lower noise levels, it also raises comfort during work.



Easy toner replacement without work interruption

Continuous run reduces downtime by allowing toner to be replaced without interrupting work. With no levers required for replacement, it can be done quickly and easily.



■ Toner replacement

Automatic recognition of paper size even with mixed sizes

The large-capacity cassettes open simply with just one-touch of a button and can be loaded with 680 sheets of paper (64g/m²). The paper size is detected automatically when loading paper, ensuring easy paper supply without any worries about setting errors.



■ Cassettes

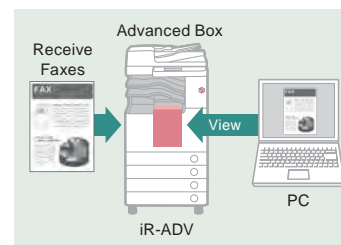
03 Fax work without fuss or waste

Paperless fax enables fax transmission without outputting originals

The fax driver allows efficient paperless fax transmission of digital documents. A cover sheet created with Cover Sheet Editor can be added when sending. You can send crisp fax documents without blurring and blemishes, at the same time you can save paper consumption.

Forwarded fax reception visible at your desk

A fax document received by the main unit can be transferred to the Advanced Box, without outputting. You can access and check the contents of the fax from your desktop computer. With no need for a server, it promotes operational efficiency and cost savings.



Reducing communication costs with Internet fax/intranet fax

These models support W-NET FAX compliant with the TTC standards (JT-T37 full mode) and are capable of high resolution fax transactions at a resolution of 600 dpi.

* Supports B/W communication only.



range of office needs

04 Speedy full-color digitization

High-speed full-color scan improves digitization efficiency

This black-and-white device boasts full-color scanning at a high speed of 51 sheets per minute (A4/300dpi). It makes it easy to digitize paper documents in the office by efficient digitization without losing color information of a paper document.

* The optional Additional Memory Type A (512MB) is required to scan in Auto (Color/BW), Full Color or Gray scale at a resolution of 200 x 400, 400 x 400, or 600 x 600dpi.

Create a PDF according to the application

PDF with Reader Extensions*1*2

It allows users' usage rights such as filling out, saving, annotating, digitally signing, or revising PDF forms in Adobe® Reader version 7.0 or higher.

Searchable PDF*1

It converts a scanned image to searchable text data. The digitized document can then be searched speedily.

*1 Scan Solution Extension Kit-B1 is required.

*2 With Adobe® Reader XI or higher, part of this function is a standard function of the application.

■ PDF with Reader Extensions

■ Searchable PDF

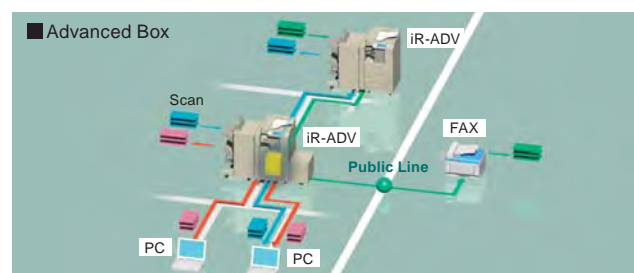
Input search keyword and location Show all documents containing the keyword Show highlighted keyword within the selected document

Advanced Box file sharing

Advanced Box (hard-disk space in the main unit) enables file sharing via WebDAV or SMB protocols. You can share files among computers and even other devices on the same network.

* Hard disk mirroring is recommended for data replication purposes. The optional HDD Data Encryption and Mirroring Kit-C2 is required.

* Be sure to back up data at regular intervals. Otherwise data would be irretrievably lost if a hard disk failure occurred.

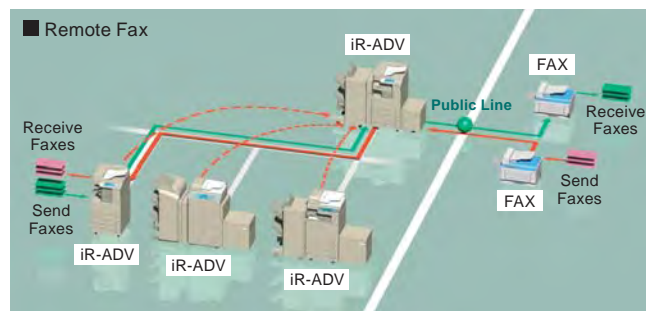


05 Device combination enhances work efficiency

Improves efficiency for fax operation and destination sharing

Remote Fax* enables you to send and receive faxes from a device not equipped with fax function by using a line from a fax-equipped device on the same network. Shared Destination makes a destination saved on one device available to other devices on the same network. With these functions, you can reduce fax deployment costs, the registration and management burden for addresses, etc.

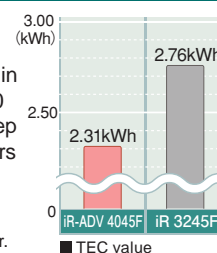
* The optional Remote Fax Kit-A1 is required for the iR-ADV 4045/4035/4025 models. Remote Fax Kit-A1 is not available with the 4045F/4035F/4025F.



06 Promotes an environmental consciousness such as energy conservation

Quick Start and low power consumption

The device has a TEC value*1 (an indicator of low energy consumption) of 2.31kWh,*2 and achieves low power consumption of 1W when in sleep mode. With its warm up time of under 30 seconds,*3 Quick Start recovery time from sleep mode of less than 10 seconds, the device offers a balance of efficiency in operation and power-saving when non-operational.



*1 Measured with the method qualified by Energy Star.

*2 4045/4045F models only.

*3 4045F/4035F/4025F models: 38 seconds.

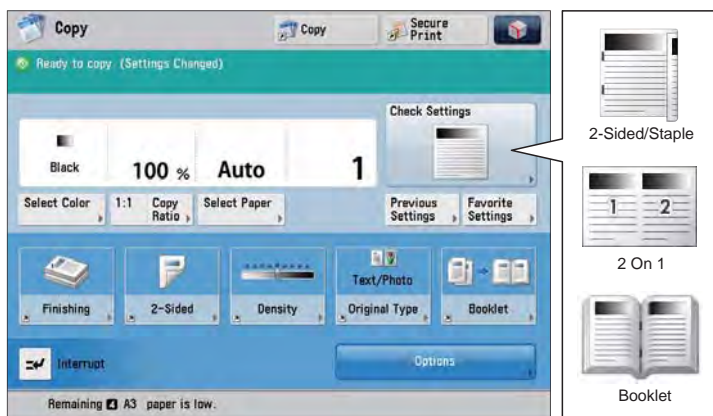
Compliance with variety of environmental standards

Compliant with the Ecomark, Energy Star®, Green Procurement programs and the RoHS Directive, which bans the use of six hazardous materials. Part of the main unit incorporates bio-based plastics.*

* Plant based plastics designed to reduce environmental footprint. Exterior plastic castings have achieved 5V classification under the UL 94 Flammability Standard.



COPY



On the Copy screen, you can save settings such as Image Combination and 2-sided/Staple, and N on One in the preview display in the upper right corner. You can also preset 5 frequently used functions.

■ Handles urgent high-speed copies

The device can copy high-volume documents speedily with its continuous copy speed of 45 sheets per minute (A4 landscape).* In addition, the quick first copy and interrupt functions allow you to handle urgent copy jobs without stress.

* iR-ADV 4045/4045F models only. iR-ADV 4035/4035F models: 35 sheets/min, iR-ADV 4025/4025F models: 25 sheets/min.

■ Automatic duplex copying

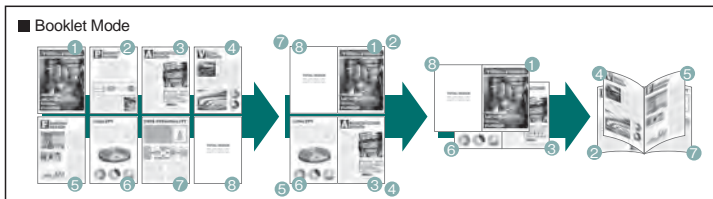
Reduce paper costs by automatically scanning 2-sided originals and printing 2-sided copies.

■ N on One

Reduce paper costs further by combining multiple originals onto 2 on 1, 4 on 1 or 8 on 1 layout copies.

■ Booklet

You can copy single-sided or double-sided originals in such a way that the copies are made into a booklet. When the Booklet Finisher is attached, you can choose to perform saddle stitching. Supports the production of easy-to-read documents.



■ Collate/Group/Staple/Hole Punch

Improves work efficiency to suit office needs. 2 hole punch function is also available.

■ Favorite Settings/Previous Settings

You can save a combination of frequently used settings and recall up to three previous copy job settings.

■ Various Copy (Zoom) Ratio including automatic and manual zoom

■ Remove background color or reduce bleedthrough with Image Adjustment

■ Sample Copy, to output one copy of your document prior to high-volume output

■ Watermark/Print Date, to prevent unauthorized copying

■ Erase Frame/Shift/Gutter, to erase shadows or frame lines generated around the original image, shift the position of the original image, and create gutters along the page sides

■ Set a variety of document sizes with Different Size Originals

■ Output one job via two machines on the same network with Job Clustering

SCAN & SEND

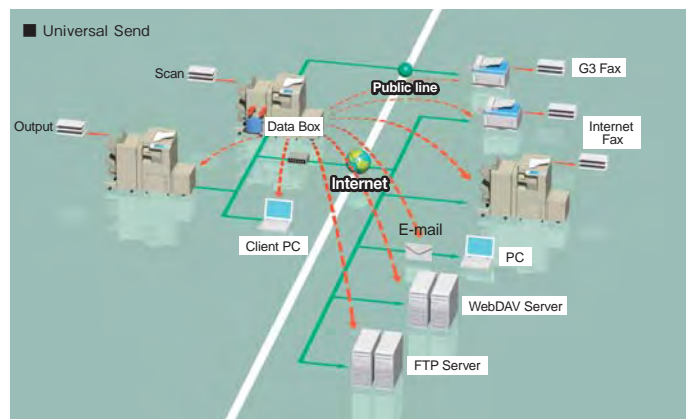


On the Scan and Send screen you can easily add settings such as sending destinations, color/BW, resolution, file format, etc. To improve work efficiency even further, you can save frequently used settings in the Favorite Settings in the upper right corner.

* The optional Additional Memory Type A (512MB) is required to scan in Auto (Color/BW), Full Color or Gray scale at a resolution of 200 x 400, 400 x 400, or 600 x 600dpi.

■ Universal Send, simultaneous transmission via various methods

A document can be sent to multiple destinations in a single operation via a range of methods such as e-mail, fax and Internet fax. It enables efficient data sharing by reducing time and labor caused by different communication environments.



■ Sending files via a variety of protocols

These models support sending via SMB for serverless file sharing across your organization, as well as FTP. You can also send files securely to external systems via WebDAV.

■ Sending files to e-mail destinations

You can send e-mail without using a computer. It is also possible to divide a mail file when its file size is huge. Security is ensured by POP before SMTP/SMTP authentication, SSL encryption of the communication path, etc.



■ E-Mail Entry Screen

■ Send settings

There are a number of settings to support transmission, including Delayed Send, Job Done Notice, Preview, Stamp, etc. It has enhanced security features to prevent transmission errors.

Support a variety of PDF file types

Compact PDF

It sends a PDF file in 1/10 size of the original, to make network transfer of e-mail attachment files easier.

PDF/A-1b

Conforms to the digital record management format based on the ISO standard. Suitable for long-term preservation of digital documents, such as government archives.

Optimize PDF for Web

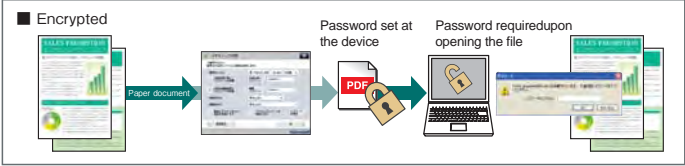
It is a format for web archiving of e-documents. Files can be downloaded and reviewed on a per-page basis even if all pages are not downloaded.

Trace & Smooth*1

Extracts the edges of text and graphics and turns them into smooth outlines. Legibility and clarity is maintained even when expanded.

Encrypted*2

It encrypts a PDF file with a password, to prevent potential information leaks.



Device Signature PDF*2 and User Signature PDF*3

Digital Signature PDFs can be generated with either a Device signature or a User signature affixed. When the PDF file is opened, the authenticity of the document can be verified.

Time Stamp PDF*3

During scanning, time data is added to the PDF by the Time Stamp server, making it possible to prove when the file was created.

Adobe LiveCycle™ Rights Management ES

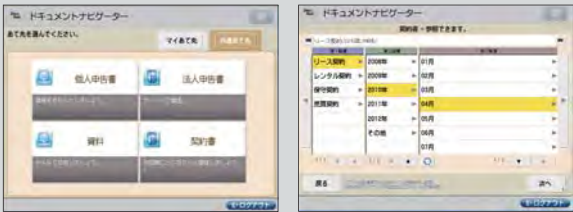
These models support Adobe® LiveCycle™ Rights Management ES functionality via a user-installed rights management server. You can assign fully editable usage rights such as reviewing, copying, editing, or printing to PDF files. Rights can be modified for rights-protected files after distribution.

*1 The optional Scan Enhance Kit-B1 is required.
*2 The optional Scan Security Kit-A1 is required.
*3 The optional User Signature and Time Stamp Kit-A1 are required.

Document Navigator

Document Navigator lets you easily navigate through a list of destinations in directories of folders on your computer. You can name document file names easily and efficiently. The overall process can be simplified and streamlined.

* Third-party application provided by 4D Networks, Inc.



ScanToOffice Pro

ScanToOffice Pro automatically converts scanned documents to various types of formats including Microsoft® Word/Excel/PowerPoint, text, and PDF for active reuse.

* Third-party application provided by Panasonic Solution Technologies Co., Ltd.

Anyplace Scan for MEAP ADVANCE

With the Send to Myself button and authentication, scanned data can be e-mailed and saved to Advanced Box. Simply send an e-mail to users to notify them of the data location.

* Available as an option.

FAX



On the easy-to-understand dedicated fax screen, it's as simple to select a destination and send a fax as it is on a regular fax machine. Faxes can also be sent from the Scan and Send screen.

Super G3 fax communication with 2-second transmission

These models provide robust fax capabilities, delivering a maximum transaction speed of 33.6 kbps, which translates into 2.0 seconds per transaction. It is capable of electronically refining for a higher level of image quality on output, independent of the settings specified by the sender.

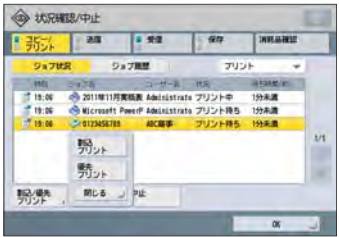
* The optional Super G3 FAX Board-AK1 is required for the iR-ADV 4045/4035/4025 models.

Multi-line fax support promotes optimized layout

These models support up to four fax lines and eight dial-in numbers to accommodate users who have high-volume fax usage and need multiple lines. Combined with Remote Fax function, it promotes layout optimization.

Job interruption to output urgent jobs first

You can interrupt other jobs to handle an incoming fax document that needs to be output immediately. Both copy and print jobs also can be interrupted.



Corresponds to the even faster G4 fax

When connected to an ISDN communication network, the device can be extended to the faster G4 fax and perform high-speed 1-second communication (A4 standard document). It contributes even more savings in communication costs.

* The optional G4 FAX Board-H1 and optional PCI Expansion Bus-F2 is required.

Fax security to prevent wrong transmission.



To prevent fax documents from being sent to incorrect destinations, the Confirm Entered Fax Number feature displays a confirmation screen when enabled. The screen requires users to re-enter a manually entered fax number a second time. The Address Book Destination Restriction feature can restrict users from adding new destinations to the Address Book, and they are limited to select destinations registered in the Address Book. Additionally, these models are compliant with the FASSEC1 security guidelines for business use of security features.



Confirm Entered Fax Number

Combined use with System Box

You can securely store fax/fax documents in System Box folders upon receipt, or when you want to save failed forwarding documents. By disallowing printing these documents outside normal business hours, you can safeguard your data.

Address Book records up to 1,600 destinations, with 200 on easy One Touch Button recall

Handy Sending-Receiving Functions include Rotation Sending, Memory Sending, 2-Sided Printing, etc.

Meet Various printing needs with multiple OS support

PRINT

Multi PDLs to enhance flexibility with wide-ranging PDL choices

The device complies with many network protocols and a variety of PDL (Page Description Language). It insures a smooth introduction to an office with a combination of different OS, such as Mac OS and Windows®. Supported PDLs include high-speed LIPS LX, LIPS V that provides backwards compatibility with LIPS, and Adobe® PostScript®3™ that addresses production needs.* It offers comfortable performance while taking full advantage of the office environment.

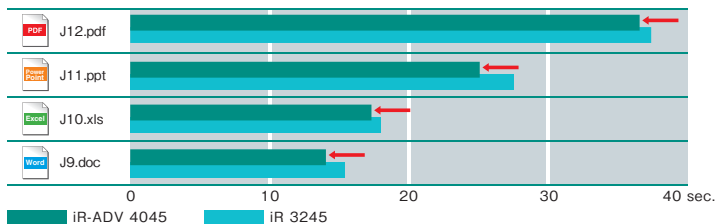
* Available as an option.

LIPS LX speeds up data processing

LIPS LX

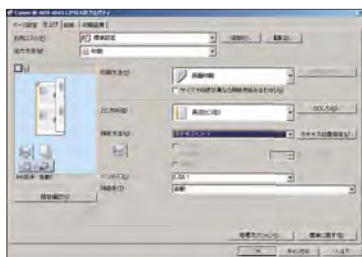
LIPS LX is Canon's proprietary printing technology. With LIPS LX, load is balanced out between computers and the controller, as computers assume the task of image rendering, and the controller processes rendered images for printing to these models. This achieves higher-speed data processing.

Comparisons in print speeds



Easy-to-use and feature rich Printer Driver

The graphical, intuitive, and easy-to-use printer driver helps to perform various print tasks. Print options such as the paper size, paper source, and finishing can be specified easily. On Windows® systems, you can edit your documents while previewing the image using Page Composer.



Erande My Print for MEAP ADVANCE

Print data from a computer can be saved in the main unit without immediate output to paper. The device automatically displays the job list for each user, allowing you to select only the required job for output. It prevents accidental output and contributes to cost reductions. It's also easy to use, as it requires no special configuration on the computer.

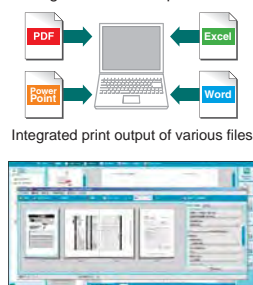
* Available as an option.



imageWARE Desktop supports fax/output work

Digital data created on various software applications can be output together on a single setting. By displaying the finished image in the print settings, it prevents unnecessary output due to misconfiguration. In addition, the computer screen displays a notice when a fax is received. Users can easily view the content and even enter a comment directly and reply. It streamlines fax and output work by coordinating several devices and computers.

imageWARE Desktop



Further enhance convenience by connecting to a network

NETWORK

Set up and manage from your computer with Remote UI

Remote UI is a web-based application that helps to provide remote device management and control. When you enter the device IP address in the address field of your web browser, it automatically launches to let you access the device functions remotely from your computer. You can then check the device status, work with document files, or specify various device settings, as well as register destinations, manage Advanced Box, and back/restore data.



Web Browser function allows you to share data via website

Web Browser function allows you to view web pages from the touch panel display of the main unit. All you need to do is to enter the URL you want in the Web Browser screen. Using the Toolbar, you can browse, print, or register web pages in Favorites, or access Menu options. You can also upload documents stored in the Mail Box onto a web browser in the PDF file format. This all can be done without using your computer.



* The optional Web Access Software-H1 is required.

BMLinkS, to manage a multi-vendor environment

BMLinkS, short for Business Machine Linkage Service, can help manage a multi-vendor environment to configure and monitor MFPs from multiple vendors in a unified manner. A dedicated MEAP application needs to be installed on these models.

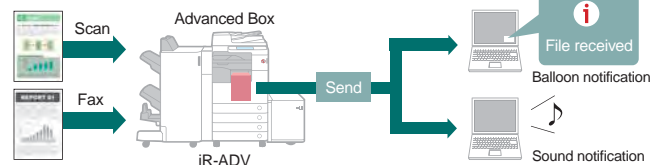


File Receipt Notification Tool for instant notification

When a fax or scanned document arrives in Advanced Box, a notification pop-up information or sound appear on your computer. Even if you are focused on other work, you can see that a file has arrived, thus reducing errors and problems. Forwarding received fax documents helps to quickly identify the received fax document.

* You can download the tool from Canon's website (<http://canon.jp>).

File Receipt Notification Tool



HOME, a solution for small office IT environments

HOME-UNIT enhances security. HOME-PORTAL, a SaaS application, helps manage information and communication efficiently within your organization. In addition, HOME-CC, a contact center, serves as your remote IT administrator, to help manage HOME efficiently.

* Also supports remote access and connection among bases using HOME-UNIT.
* A contract is required.
(Full Package Initial cost: 60,000 yen, tax excluded
Monthly fee: 12,000 yen, tax excluded)



HOME-PORTAL



Supports the establishment of a secure environment and reduces administrative burden

MANAGEMENT

Device Management

■ Department ID Management

You can limit output volume and manage copy, scan, and print work for each department out of a maximum of 1,000 departments. Access is limited and managed by Department IDs and passwords.

■ Remote Operation to operate device functions remotely from your PC

You can operate device functions remotely from your personal computer. You are provided access to all system functions from the touch screen and the hard keys.

* The optional Remote Operator's Software Kit-B1 is required.

■ Device Data Delivery

Device information can be shared between imageRUNNER ADVANCE devices, when these devices are connected over the same network. By registering device information on a reference device, system administrators can set the device to automatically or manually deliver such information as the Address Book, Department ID, and settings specified in Additional Functions to up to 100 other specified devices on the network.

■ Power Switch offers easy shut down

Shut down is as easy as turning OFF the Power Switch on the front right of the device.

■ Remote Shutdown offers simultaneous remote power OFF for devices

Use Remote UI to shut down the device from your desk computer. Also, if using iWEMC or iWMA, you can shut down simultaneously at a set time. Remote simultaneous shutdown is useful on weekends or long vacations, and also in the event of a power failure or a statutory inspection of the entire building. In addition to reducing the burden on administrators, it also cuts power consumption.

■ Remote Shutdown



■ NET EYE to support remote control for stable operation



This online support system automatically notifies the monitoring center of an error or problem, paper jams, toner levels, etc., to effect rapid maintenance response. It supports stable operation and reduces the burden on administrators.

* A contract is required (gratis).

Security Enhancements

■ Secure Watermark to prevent unauthorized copying

This feature copies a document with a background pattern. Since the background pattern emerges in subsequent copies, you can see at a glance that it is a secondary copy. Secure Watermark copy can also be prescribed in the administrative settings.

* The optional Secure Watermark-B1 is required.

■ Document Scan and Copy Lock & Tracking

This feature embeds Track and Lock Code (TL Code) within copied or printed documents. TL Code is low visible digital information (dot patterns) that can be detected easily. The "who copies what at which device" information can be also embedded to track down a person who makes an unauthorized copy.

* TL Code may not be embedded within documents containing solid color background and photos.

* The optional Document Scan & Copy Lock Kit-B1 and Image Data Analyzer Board-B1 are required.

■ Erase all data stored on the hard disk

HDD Data Encryption automatically encodes all data stored on the hard disk of these models for enhanced security. It utilizes Canon MFP Security Chip 2.01 that has achieved the Common Criteria (ISO 15408) EAL 3 certification.

* The optional HDD Data Erase Kit-C1 is required.

■ HDD data encryption

Job files received at the hard disk are automatically deleted when each job is completed. However, only the file's directory entry is removed. The data itself still exists on the hard disk in hidden files and is potentially recoverable. These models allow system administrators to erase all data stored on the hard disk completely.

* The optional HDD Data Encryption and Mirroring Kit-C4 is required.

■ IEEE2600.1

This device conforms to IEEE Std. 2600TM-2008 (IEEE 2600), the international standard for information security of MFPs and printers.

* Requires the appropriate configuration/setting including optional accessories.

■ Access Management System

Enables control of user access to copy, scan, and send tasks, etc., according to the job content and each user's privileges.

* The optional Access Management System Kit-B1 is required.

■ Password entry per sending access to the Address Book

■ IP Sec/IEEE802.1X improves network communication safety

■ Initialize All Data/Settings wipes and reformat the hard disk

■ MAC & IP address filtering prevents unauthorized access to the imageRUNNER ADVANCE Series

IC Card Authentication Pro for MEAP ADVANCE

Personal authentication with an IC card*, such as employee ID, can be required to use the device. In addition, without output of a print job, secure output can be assured by informing a list of authenticated users only of the specific job output.

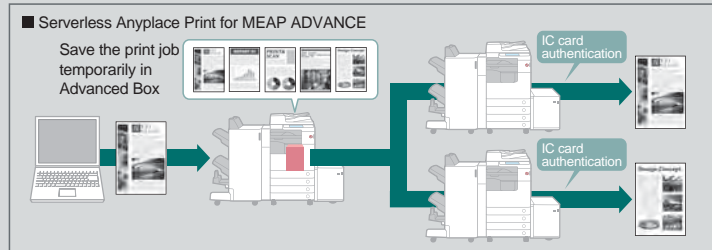
* FeliCa, MIFARE, and eL WISE cards are supported. Available as an option.



Serverless Anyplace Print for MEAP ADVANCE

Without installing a dedicated server, secure print output can be performed from any iR-ADV on the same network with IC card authentication, etc. In addition, by choosing from the displayed list of print jobs, you can prevent print waste due to misconfiguration, helping to reduce costs further.

* Available as an option.



imageWARE Accounting Manager for MEAP ADVANCE

Each user's monthly usage figures are displayed on the panel to raise awareness of security and costs. In addition, the administrator can also see the combined usage figures and check the device's history.

* Available as an option.

DESIGN

Aiming to provide further comfort to people and the office

■ Universal design provides ease of use to everyone

- Paper jams are solved with ease and speed
- Voice Guidance Kit supports basic operation with user voice recognition*
- ADF Access Handle supports close ADF operation by users in a seated position*
- * Available as an option.



■ ADF Access Handle



■ Voice Guidance Kit

Color Universal Design (CUD) Certification Mark

The imageRUNNER ADVANCE Series has received the color universal design (CUD) certification mark from the non-profit Color Universal Design Organization (CUDO) to ensure that the product can convey information to anyone regardless of their color perception.



■ Product design that matches the office space

- Cashmere beige, a unique and calm base color
- Round Square with soft rounded corners
- Compact footprint, space-saving for easy installation
- Unified design that symbolizes the functional integrity of the iR-ADV Series



SPECIFICATION

Main Unit				
Model Name	iR-ADV 4045/4045F		iR-ADV 4035/4035F	iR-ADV 4025/4025F
Type	Desktop			
Resolution(Scan)	600 dpi x 600 dpi			
Resolution(Print)	1200 dpi x 1200 dpi			
Halftone	256 Gradations			
Acceptable Originals	Maximum Size: A3 Sheet, Book, Three-dimensional objects (Maximum approx. 2 kg)			
Paper Size	A3, B4, A4, A4R, B5, B5R, Postcard, Double Postcard, Quarter-dividable Postcard, Custom Size (99 mm x 148 mm to 297 mm x 431.8 mm), Envelope (Nagagata 3, Yogatanaga 3, Kakugata 2)* ¹			
Margins	Top:4.0 mm, Left and Right:2.5 mm, Bottom:2.5 mm (3.5 mm:above B4, 5.5 mm:free size)			
	Paper Weight	Cassette, Deck:60 to 128 g/m ² , Stack Bypass:52 to 220 g/m ²		
Warm Up Time	From Power On	iR-ADV 4045/4035/4025:30 sec. or less (Temperature:20 deg C), iR-ADV 4045F/4035F/4025F:38 sec. or less (Temperature:20 deg C)		
	From Sleep Mode	10 sec. or less(Temperature:20 deg C)		
First Copy Time* ²		3.8 sec.	3.8 sec.	5.2 sec.
Copy/Print Speed	A3	22 ppm	22 ppm	15 ppm
	B4	25 ppm	25 ppm	13 ppm
	A4	45 ppm	35 ppm	25 ppm
	B5	45 ppm	35 ppm	25 ppm
Magnification	Regular Paper Size	1:1±0.5%, 1.15, 1.22, 1.41, 2.00, 4.00, 0.86, 0.81, 0.70, 0.61, 0.50, 0.25		
	Copy Ratio	25 to 400 %(in increments of 1 %)		
Paper Feeding System/ Capacity (64/m)	Cassette	680 sheets x 2 + 680 sheets x 2(Double Cassettes Pedestal-AF1*)		
	Stack Bypass	80 sheets		
	Deck	3,000 sheets(Paper Deck Unit-B2*)		
Multiple Copies	999 sheets			
Power Requirement	100 V AC, 15 A, Common to 50 Hz and 60 Hz			
Maximum Power Consumption	1.5 kW or less			
Standard Power Consumption(TEC)* ⁴	2.31 kWh		1.93 kWh	1.29 kWh
Dimensions	565 mm(W) x 708 mm(D) x 902 mm(H)			
Weight	Approx. 78 kg			
Installation Space* ⁵	876 mm(W) x 708 mm(D)			
Memory Capacity	RAM Standard:1256 MB, Maximum:1768 MB* ³ , HD Standard:80 GB, Maximum:250 GB* ³			
Inner Tray Paper Capacity* ⁶	250 sheets (A4, B5), 100 sheets (A5R), 100 sheets (A3, B4, A4R, B5R)			
Additional Functions	Automatic Paper Selection, Auto Collate, Auto Orientation, Reserving Copy Jobs (20 jobs), Copy Sample, Job Build, Interrupt Copy, Different Size Originals, Original Type Selection (Text, Text/Photo, Photo), Density Adjustment (Automatic/Manual), Finishing (Collate Group, Staple* ³ , Hole Punch* ³), 2-Sided, Booklet, Image Combination (2 on 1/4 on 1/8 on 1), Cover, Sheet Insertion (Chapter Page/Index Page), Transparency Interleaving, Job Lock* ³ , Secure Watermark* ³ , Page/Copy Set Numbering, Watermark/Print Date, Frame Erase, Margin, Shift, Sharpness, Image Creation (Nega/Posi, Image Repeat/Mirror), Job Block Combination Form Composition, Store in User Inbox, Multiple Copy, Scan Image Check, Job Done Notice, Recall (interpolated 3 previous jobs) Mode Memory (interpolated 9 jobs), etc.			

*1 Please use envelopes for laser printer by Heat Co., Ltd. Using other envelopes may result in creased output or paper jam. *2 A4 landscape set on platen, paper election from first-drawer cassette and delivered to lower center tray. *3 Option *4 Measured with the method qualified by Energy Star. *5 When extending the Stack Bypass to the maximum length. *6 Please see specification for paper capacity with optional accessories.

Automatic Document Feeder (Standard)		
Type	Duplex Automatic Document Feeder	
Original Size /Types	Paper Size	A3, B4, A4, A4R, B5, B5R, A5, A5R, B6R
Original Capacity	Paper Weight	B/W:1-sided original:42 to 128 g/m ² , 2-sided original:50 to 128 g/m ² Color:64 to 128 g/m ²
	Capacity	100 sheets (80 g/m ²)
Scan Speed (A4R)	Copying	iR-ADV 4045/4045F 45 ipm (1-sided scan), 17 ipm (2-sided scan) iR-ADV 4035/4035F 35 ipm (1-sided scan), 17 ipm (2-sided scan) iR-ADV 4025/4025F 25 ipm (1-sided scan), 15 ipm (2-sided scan)
	Scanning (300 dpi)	1-sided Scan:51 ipm (Color and B/W) 2-sided Scan:17 ipm (Color and B/W)

Advanced Box (Standard)	
Disk Space	Standard:9.6 GB, Maximum*:112.7 GB
Maximum Path Length	256 byte
Maximum Number of File per Directory	interpolated 1,000 files (including folders)
Maximum Number of Files	interpolated 100,000 files (including folders)
Maximum File Size	interpolated 2 GB
Maximum Number of Clients for Simultaneous Access	SMB:32/WebDAV:12

* Option

LIPS LX Printer (Standard)		
Type	Embedded	
Print Size	Based on the specifications of Main Unit	
Print Speed	Based on the specifications of Main Unit	
Resolution	Data Process	1200 dpi x 1200 dpi, 600 dpi x 600 dpi
	Print	1200 dpi x 1200 dpi
Page Description Language	LIPS LX	
Supported Protocol	TCP/IP (LPD/Port9100/IPP/PPS/SMB/FTP/WSD) , IPX/SPX(NDS, Bindery)	
Supported OS	Windows®XP/Windows Vista®/Windows®7/Windows®8/Windows® Server 2003/Windows® Server 2008/Windows® Server 2012, Mac OS X (10.4.9 or later)	
Standard Font	N/A	
Emulation	Standard	BMLinkS, TIFF/JPEG Direct Print
	Option	PDF/XPS Direct Print*
Interface	USB2.0 High-Speed, 1000Base-T/100Base-TX/10Base-T(IEEE 802.3-compliant)	
Margins	5 mm in all directions, Engine margin selectable in printer driver	

* When installing the Direct Print Kit(for PDF/XPS)-H1

LIPS V Printer Kit-AN1 (Option)		
Type	Embedded	
Print Size	Based on the specifications of Main Unit	
Print Speed	Based on the specifications of Main Unit	
Resolution	Data Process	1200 dpi x 1200 dpi*, 600 dpi x 600 dpi
	Print	1200 dpi x 1200 dpi*
Page Description Language	LIPS V(LIPS LX, LIPS IV, LIPS III, LIPS II+)	
Supported Protocol	TCP/IP(LPD/Port9100/IPP/PPS/SMB/FTP/WSD), IPX/SPX(NDS, Bindery)	
Supported OS	Windows®XP/Windows Vista®/Windows®7/Windows®8/Windows®Server 2003/Windows®Server 2008/Windows®Server 2012, Mac OS X (10.4.9 or later)*2	
Standard Font	Japanese	Heisei-Mincho-W3, Heisei-Kaku-Gothic W5, Round Gothic, LinePrinter-Bold
	Alphabet	Courier, Swiss, Dutch, Symbol
	Other	Barcode (EAN-128, CODE39, NW-7, JAN, Postal Barcode, OCR font)
Emulation	N201, ESC/P, 15677, HP-GL, HP-GL2	
Interface	USB2.0 High-Speed, 1000Base-T/100Base-TX/10Base-T(IEEE 802.3-compliant)	
Margins	5 mm in all directions, Engine margin selectable in printer driver	

*1 When using LIPS LX Driver *2 LIPS LX only when using Mac OS

PS Printer Kit-AN1 (Option)		
Type	Embedded	
Print Size	Based on the specifications of Main Unit	
Print Speed	Based on the specifications of Main Unit	
Resolution	Data Process	1200 dpi x 1200 dpi, 600 dpi x 600 dpi
	Print	1200 dpi x 1200 dpi
Page Description Language	Adobe®PostScript®3™	
Supported Protocol	TCP/IP (LPD/Port9100/IPP/PPS/SMB/FTP/WSD), IPX/SPX (NDS, Bindery), Apple Talk(PAP)	
Supported OS	Driver	Windows®XP/Windows Vista®/Windows®7/Windows®8/Windows®Server 2003/Windows®Server 2008/Windows®Server 2012, Mac OS X (10.4.9 or later)
	PPD	Mac OS X (10.3.9 or later), Mac OS 9 (9.1 or later)
Standard Font	Japanese	Heisei-Mincho-W3, Heisei-Kaku-Gothic W5
	Alphabet	139 font types
Emulation	N/A	
Interface	USB2.0 High-Speed, 1000Base-T/100Base-TX/10Base-T(IEEE 802.3-compliant)	
Margins	4 mm in all directions, Engine margin selectable in printer driver*	

* When using Mac OS X

Pull Scan Functions (Standard)	
Type	Color Scanner
Maximum Scan Size	Based on the specifications of Main Unit
Resolution (Scan)	75, 150, 200, 300, 400, 600 dpi*1 (adjustable in increments of 1dpi from 75 to 600dpi when B/W)
Resolution (Original Scan, A4R, 300dpi)	51ppm (B/W and Color)
Interface	1000Base-T/100Base-TX/10Base-T (IEEE 802.3-compliant)
Supported Protocol	TCP/IP
Supported OS	Windows®XP/Windows Vista®/Windows®7/Windows®8/Windows®Server 2003/Windows®Server 2008
Driver Operation Environment	Computers that above Software operate
Driver	TWAIN2/WIA-compliant
Image Mode	Auto Switch between Color and B/W, Color, B/W (2), Gray Scale

*1 The optional Additional Memory Type A (512 MB) is required to scan in Auto (Color/BW), Full Color or Gray scale at a resolution of above 400 dpi. *2 In a 64-bit environment, TWAIN applications that can run in 32-bit virtual mode are only supported.

Push Scan Functions (Standard)		
Type	Color Scanner	
Maximum Scan Size	Based on the specifications of Main Unit	
Resolution (Main Scan x Sub Scan)	100 x 100 dpi, 150 x 150 dpi, 200 x 100 dpi, 200 x 200 dpi, 200 x 400 dpi, 300 x 300 dpi, 400 x 400 dpi, 600 x 600 dpi*1	
	Scan Speed(A4R:300 dpi) 51 ppm (B/W and Color)	
Interface	1000Base-T/100Base-TX/10Base-T	
Supported Protocol	SMB(TCP/IP), FTP(TCP/IP), SMTP(TCP/IP)*2, WebDAV*3	
Supported OS/ Application	SMB	Windows®XP Professional/Windows Vista®/Windows®7/Windows®8/Windows®Server 2003/Windows®Server 2008/Windows®Server 2012, Samba 2.x/3.x (RedHat Linux 9.0, Mac OS X 10.5x/10.6x)
		Microsoft Internet Information Server Version 5.0/ 5.1/6.0/7.0/7.5, RedHat Linux 9.0, Mac OS X 10.5/ 10.6, Solaris 10
	WebDAV	Microsoft Internet Information Server Version 5.0/ 5.1/6.0/7.0/7.5, Apache 2 (RedHat Linux 9.0, Mac OS X Server 10.5, Solaris 10)
		Microsoft Exchange 2003 SP2, Microsoft Exchange 2007, Sendmail 8.14.4
Output Format	Single Page	TIFF (MMR)/JPEG/PDF/XPS
	Multiple Pages	TIFF (MMR)/PDF/XPS
Image Mode	Text, Text/Photo, Photo	
	Compact PDF, PDF (Optimized for Web), PDF (Apply Policy), PDF/A-1b, PDF with Reader Extensions*, PDF (Trace & Smooth)*4, Encrypted PDF*4, Searchable PDF (OCR)*4, Device Signature PDF*4, User Signature PDF*4, Time Stamp PDF*4	
	Compact XPS, Searchable (OCR)XPS*4, Device Signature PDF*4, User Signature PDF*4	

*1 The optional Additional Memory Type A (512 MB) is required to scan in Auto (Color/BW), Full Color or Gray scale at a resolution of 200 x 400, 400 x 400, or 600 x 600 dpi. *2 Supporting the encrypted communication (SSL) for SMTP authentication or SMTP sending. *3 Supporting encrypted communication (SSL). *4 Option

Internet/Intranet Fax Sending/Receiving Functions (Standard)		
Protocol	Internet Fax	SMTP*(Send)/POP3*(Receive)
	Intranet Fax	SMTP*(Send/Receive)
Communication Mode	Simple Mode, Full Mode (ITU-T T.37-compliance or W-NET FAX-compliance)	
Original Size	A3, B4, A4, A4R, B5, B5R, A5, A5R	
Resolution (B/W)	200 x 100 dpi, 200 x 200 dpi, 200 x 400 dpi*3, 300 x 300 dpi*3, 400 x 400dpi*3, 600 x 600dpi*3	
Supported Mail Server	Windows®Server 2003 (SMTP Service), Sendmail 8.12.8, Lotus Domino R6.5	

*1 Supporting the encrypted communication (SSL) for SMTP authentication and SMTP sending. *2 Supporting the encrypted communication (SSL) for APOP/POP before SMTP or POP receiving. *3 Available depending on destination's settings (receiving capability).

The imageRUNNER ADVANCE Series has met various environment, security, and network standards and guidelines.



Fax Functions		
Name		Super G3 FAX Board-AK-1 (Single line board)
Applicable Line*2		General telephone line, PSTN x 1 (interpolated 4 lines*3) available using extension kit), FAX Line
Scanning Line Density	Standard Mode	G3:8 dot/mm x 3.85 line/mm
	Fine Mode	G3:8 dot/mm x 7.7 line/mm
	Super Fine Mode	G3:8 dot/mm x 15.4 line/mm
	Ultra Fine Mode	G3:16 dot/mm x 15.4 line/mm
Communication Speed		Super G3: 33.6 kbps, G3: 14.4 kbps
Encoding System		MH, MR, MMR, JBIG
Communication Mode		Super G3, G3
Original Size		A3, B4, A4, A4R, B5, B5R, A5, A5R
Printable Paper Size		A3, B4, A4, A4R, B5, B5R, A5R
Transmission Time		Approx. 2.6 sec.Using A4, Canon original paper, Standard mode, ECM (JBIG) Sending
Fax Driver		Approx. 1.8sec.Using A4, Canon original paper, G4 Fine mode, JBIG Sending
Interface	Supported Protocol	USB2.0 High-Speed, 1000Base-T/100Base-TX/10Base-T (IEEE 802.3 -compliant)
	Supported OS	TCP/IP (LPD/Port9100/SMB/WSN), IPX/SPX (NDS, Bindery)
Other Features*7		
One Touch Button:200 items*4, Address Book:1,600 destinations*4, Broadcast Sending:interpolated 256 destinations, Reserving Jobs:interpolated 64jobs, Available Sending Functions:Rotation Sending, Manual Sending, Memory Sending, Direct Sending, Line Designation, Senders Log, Sender Name (100 names), Job Done Notice*5, FAX Number Check, F-code, Password, Available Receiving Functions:Rotation Receiving, 2-sided Printing, Cassette Selection, Image Reduction, Receiving Log, 2on1 Log, Tel/Fax Auto Switching*4, Manual Receiving*4, On-hook, Remote Receiving, Output Tray Designation, Dial-in Receiving (Two destinations per one line)*4		

*1 When expanding G4 FAX Board, "PCI Expansion Bus-F2" is required. *2 In case of Volp (Voice Over IP) line, data transmission is performed for each packet. However, FAX communication may fail due to the loss of packet. *3 When using 4 lines, extension kit and also "Additional Memory Type A (512 MB)" are required. *4 One Touch or Address Book is common to the address book used for sending file or mail. *5 Option *6 Not available for G4 FAX Board

Inner Finisher-D1 (Option)			
Paper Size/Type		See separate paragraph	
Tray Capacity	Standard Tray	Non-collate, Collate, Group: 1,000 sheets (A4, B5: interpolated 125 mm in height) 500 sheets (A3, B4, A4R, B5R, A5R:interpolated 62.5 mm in height) Collate (Shift), Group (Shift): 1,000 sheets (A4, B5: interpolated 125 mm in height) 500 sheets (A3, B4, A4R:interpolated 62.5 mm in height) Staple: 30 copies/1,000 sheets (A4, B5:interpolated 125 mm in height) 30 copies/500 sheets (A3, B4, A4R:interpolated 62.5 mm in height)	
		Non-collate, Collate, Group (mixed size sheets) 500 sheets (interpolated 44 mm in height) Staple (mixed size sheets): 30 copies/500 sheets (A3, B4, A4R:interpolated 62.5 mm in height)	
		Non-collate, Collate, Group: 100 sheets (A3, B4, A4, A4R, B5, B5R, A5R: interpolated 12.5 mm in height) Collate (Shift), Group (Shift): 100 sheets (A3, B4, A4, A4R, B5:interpolated 12.5 mm in height) Staple: 15 copies (A3, B4, A4, A4R, B5: interpolated 8.1 mm in height)	
		Non-collate, Collate, Group (mixed size sheets): 100 sheets(interpolated 12.5 mm in height) Staple(mixed size sheets): 15 copies(interpolated 8.1 mm in height)	
	Additional Tray		
	Staple	Capability	52 to 81 g/m ² :50 sheets (A4, B5), 82 to 105 g/m ² :30 sheets, 106 to 220 g/m ² :2 sheets, 52 to 81 g/m ² :30 sheets (A3, B4, A4R), 82 to 105 g/m ² :20 sheets, 106 to 220 g/m ² :2 sheets
		Position	Corner:A3, B4, A4, A4R, B5 Double:A3, B4, A4, A4R, B5
Paper Size for Shifting		A3, B4, A4, A4R, B5	
Maximum Power Consumption		Main Unit/approx. 49 W	
Dimensions*1 /Weight		697 mm(W) × 554 mm(D) × 295 mm(H)/approx. 13.5kg (when additional tray for Inner Finisher-A1 is installed)	
Installation Space with Main Unit*2		1,163 mm (W) × 708 mm (D)	

*1 When extending the Auxiliary Tray to the maximum length *2 When extending the Stack Bypass and Auxiliary Tray to the maximum length

Inner 2 way Tray-H1 (Option)		
Paper Size	A3, B4, A4, A4R, B5, B5R, A5, A5R, Postal Card, Double Postcard, Quarter-dividable Postcard, Custom Size (99 mm x 148 mm to 297 mm x 431.8 mm), Envelope	
Paper Weight	52 to 220 g/mf	
Paper Type	Thin (60 to 63 g/mf), Plain1 (60 to 63 g/mf), Plain2 (64 to 90 g/mf), Heavy1 (91 to 105 g/mf), Heavy2 (106 to 128 g/mf), Heavy3 (129 to 163 g/mf), Heavy4 (164 to 220 g/mf), Recycled, Color, Pre-punched, Tracing, Bond, Labels, Transparency, Postcard, Double Postcard, Quarter-dividable Postcard, Envelope	
Capacity	Tray B (upper)	100 sheets (A4, B5, A5R), 50 sheets (A3, B4, A4R, B5R)
	Tray A (lower)	250 sheets (A4, B5), 100 sheets (A5R), 100 sheets (A3, B4, A4R, B5R)
Dimensions/Weight		427 mm(W) x 407 mm(D) x 76 mm(H)/approx. 0.6 kg
Installation Space with Main Unit*		876 mm(W) x 708 mm(D)

* When extending the Stack Bypass to the maximum length

Embedded 2 Hole Puncher-A1 (Option)	
Paper Size	A3, B4, A4, A4R, B5, B5R
Paper Weight	52 to 220 g/mf
Paper Type	Thin (52 to 59 g/mf), Plain1 (60 to 63 g/mf), Plain2 (64 to 90 g/mf), Heavy1 (91 to 105 g/mf), Heavy2 (106 to 128 g/mf), Heavy3 (129 to 163 g/mf), Heavy4 (164 to 220 g/mf), Recycled, Color, Bond
Number/Diameter of Punch Hole	Two Holes/6.5 mm
Interval between Punch Holes	80 mm
Maximum Power consumption	Main Unit/approx. 37 W
Dimensions/Weight	144 mm(W) x 531 mm(D) x 216 mm(H)/approx. 7.7 kg
Installation Space with Main Unit*	1,273 mm(W) x 708 mm(D)

* When the Inner Finisher-D1 is installed and extending the Auxiliary Tray and Stack Bypass to the maximum length

Cassettes Feeding Unit-AF1 (Option)	
Paper Size	A3, B4, A4, A4R, B5, B5R, A5R, Custom Size (139.7 mm x 182 mm to 297 mm x 431.8 mm)
Paper Type	Plain1 (60 to 63 g/mf), Plain2 (64 to 90 g/mf), Heavy1 (91 to 105 g/mf), Heavy2 (106 to 128 g/mf), Recycled, Color, Pre-punched
Paper Capacity/Number of Available Cassette	680 sheets (64 g/mf) x 2 cassettes
Maximum Power Consumption	Main Unit/approx. 30W
Dimensions/Weight	565 mm(W) x 650 mm(D) x 248 mm(H)/approx. 27.5 kg
Installation Space for Attachment with Main Unit*	876 mm(W) x 708 mm(D)

* When extending the Stack Bypass to the maximum length

iR-ADV Pedstal-B1 (Option)	
Dimensions/Weight	565 mm(W) x 650 mm(D) x 248 mm(H)/approx. 14.8 kg

iR-ADV Caster-B1 (Option)	
Dimensions/Weight	565 mm(W) x 650 mm(D) x 85.16 mm(H)/approx. 6 kg

Paper Deck Unit-B2 (Option)	
Available Paper Size	A4
Paper Type	Plain 1(60 to 63 g/mf), Plain 2(64 to 90 g/mf), Heavy 1(91 to 105 g/mf), Heavy 2(106 to 128 g/mf), Recycled, Color, Pre-punched
Paper Capacity/Number of Available Cassette	3,000 sheets (64 g/mf) x 1 Cassette
Maximum Power Consumption	Main Unit/approx. 35W
Dimensions/Weight	372 mm(W) x 603 mm(D) x 473 mm(H)/approx. 37 kg
Installation Space for Attachment with Main Unit*	937 mm(W) x 708 mm(D)

* When extending the Stack Bypass to the maximum length

External 2 Hole Puncher-B2 (Option)	
Paper Size	A3, B4, A4, A4R, B5, B5R
Paper Weight	52 to 220 g/mf
Paper Type	Thin (52 to 59 g/mf), Plain1 (60 to 63 g/mf), Plain2 (64 to 90 g/mf), Heavy1 (91 to 105 g/mf), Heavy2 (106 to 128 g/mf), Heavy3 (129 to 163 g/mf), Heavy4 (164 to 220 g/mf), Recycled, Color, Bond
Number/Diameter of Punch Hole	Two Holes/6.5 mm
Interval between Punch Holes	80 mm
Maximum Power consumption	Main Unit/approx. 25 W
Dimensions/Weight	107 mm(W) x 623 mm(D) x 908 mm(H)/approx. 7.2 kg
Installation Space with Main Unit*	When the Staple Finisher-G1 is installed: 1,631 mm(W) x 708 mm(D),
	When the Booklet Finisher-G1 is installed: 1,749 mm(W) x 708 mm(D)

* When extending the Auxiliary Tray and Stack Bypass to the maximum length

Staple Finisher-G1 (Option)		
Paper Size/Type		See separate paragraph
Tray Capacity	Upper Tray	Non-collate, Collate, Group: 1,300 sheets (A4, B5, A5R:interpolated 188 mm in height) 650 sheets (A3, B4, A4R, B5R:interpolated 96 mm in height) Collate (Shift), Group (Shift): 1,300 sheets (A4, B5:interpolated 188 mm in height) 650 sheets (A3, B4, A4R:interpolated 96 mm in height) Staple: 30 copies/1,300 sheets (A4, B5:interpolated 188 mm in height) 30 copies/650 sheets (A3, B4, A4R:interpolated 96 mm in height)
		Non-collate, Collate, Group (mixed size sheets) 650 sheets (interpolated 96 mm in height) Staple (mixed size sheets): 30 copies/650 sheets (A3, B4, A4R:interpolated 96 mm in height)
		Non-collate, Collate, Group: 1,700 sheets (A4, B5, A5R:interpolated 243 mm in height) 650 sheets (A3, B4, A4R, B5R:interpolated 96 mm in height) Collate (Shift), Group (Shift): 1,700 sheets (A4, B5:interpolated 243 mm in height) 650 sheets (A3, B4, A4R:interpolated 96 mm in height) Staple: 30 copies/1,700 sheets (A4, B5:interpolated 243 mm in height) 30 copies/650 sheets (A3, B4, A4R:interpolated 96 mm in height)
	Lower Tray	Non-collate, Collate, Group (mixed size sheets): 650 sheets (interpolated 96 mm in height)
		52 to 81 g/m ² :50 sheets (A4, B5), 82 to 105 g/m ² :30 sheets, 106 to 220 g/m ² :2 sheets, 52 to 81 g/m ² :30 sheets (A3, B4, A4R), 82 to 105 g/m ² :20 sheets, 106 to 220 g/m ² :2 sheets
		Corner:A3, B4, A4, A4R, B5 Double:A3, B4, A4, A4R, B5
Paper Size for Shifting		A3, B4, A4, A4R, B5
Maximum Power Consumption		Main Unit/approx. 85 W
Dimensions*/Weight		648 mm(W) × 646 mm(D) × 1,097 mm(H)/approx. 46kg
Installation Space with Main Unit ^{*)2}		1,524 mm (W) × 708 mm (D)

*1 When extending the Auxiliary Tray to the maximum length *2 When extending the Stack Bypass and Auxiliary Tray to the maximum length

Booklet Finisher-G1 (Option)		
Paper Size/Type	See separate paragraph	
Tray Capacity	Upper Tray	Non-collate, Collate, Group: 1,300 sheets (A4, B5, A5R:interpolated 188 mm in height) 650 sheets (A3, B4, A4R, B5R:interpolated 96 mm in height) Collate (Shift), Group (Shift): 1,300 sheets (A4, B5:interpolated 188 mm in height) 650 sheets (A3, B4, A4R:interpolated 96 mm in height) Staple: 30 copies/1,300 sheets (A4, B5:interpolated 188 mm in height) 30 copies/650 sheets (A3, B4, A4R:interpolated 96 mm in height) Non-collate, Collate, Group (mixed size sheets) 650 sheets (interpolated 96 mm in height) Staple (mixed size sheets): 30 copies/650 sheets (interpolated 96 mm in height)
		Non-collate, Collate, Group: 1,700 sheets (A4, B5, A5R:interpolated 243 mm in height) 650 sheets (A3, B4, A4R, B5R:interpolated 96 mm in height) Collate (Shift), Group (Shift): 1,700 sheets (A4, B5:interpolated 243 mm in height) 650 sheets (A3, B4, A4R:interpolated 96 mm in height) Staple: 30 copies/1,700 sheets (A4, B5:interpolated 243 mm in height) 30 copies/650 sheets (A3, B4, A4R:interpolated 96 mm in height) Non-collate, Collate, Group (mixed size sheets): 650 sheets (interpolated 96 mm in height)
		52 to 81 g/mf:50 sheets (A4, B5), 82 to 105 g/mf:30 sheets, 106 to 220 g/mf:2 sheets, 52 to 81 g/mf:30 sheets (A3, B4, A4R), 82 to 105 g/mf:20 sheets, 106 to 220 g/mf:2 sheets
		Corner:A3, B4, A4, A4R, B5 Double:A3, B4, A4, A4R, B5
Saddle Stitch	Paper Capacity	52 to 81 g/mf:16 sheets (A3, B4, A4R), 82 to 105 g/mf:10 sheets
	Paper Size	A3, B4, A4R
Paper Size for Shifting		A3, B4, A4, A4R, B5
Maximum Power Consumption		Main Unit/approx. 113 W
Dimensions*/Weight		766 mm(W) x 646 mm(D) x 1,097 mm(H)/approx. 75kg
Installation Space with Main Unit*		1,642 mm (W) x 708 mm (D)

*1 When extending the Auxiliary Tray to the maximum length *2 When extending the Stack Bypass and Auxiliary Tray to the maximum length

Separate Paragraph	
Paper Size	A3, B4, A4, A4R, B5, B5R, A5R, Postcard, Double Postcard, Quarter-dividable Postcard, Envelope
Paper Weight	52 to 220 g/mf
Paper Type	Thin (52 to 59 g/mf), Plain1 (60 to 63 g/mf), Plain2 (64 to 90 g/mf), Heavy1 (91 to 105 g/mf), Heavy2 (106 to 128 g/mf), Heavy3 (129 to 163 g/mf), Heavy4 (164 to 220 g/mf), Recycled, Color, Pre-punched, Tracing, Coated, Labels, Transparency, Postcard, Double Postcard, Quarter-dividable Postcard, Envelope

PAPER HANDLING

More convenient and efficient 6-way paper feeding with a 5,800-sheet maximum capacity

*This product does not include the Copy Tray.

Duplex Automatic Document Feeder (Standard)

The unit is capable of simultaneously scanning both sides of a document with a paper capacity of 100 sheets (64 g/m²).

Buffer Path Unit-H1

The unit needs to be attached to use the Staple Finisher-G1 or Booklet Finisher-G1.

Price (w/o tax)
30,000 yen

Booklet Finisher-G1

The finisher delivers advanced in-line finishing capabilities with two output trays. It provides a 50-sheet staple capacity (64 g/m²), supporting corner, double, and saddle stitch stapling.

Price (w/o tax)
420,000 yen

External 2 Hole Puncher-B2

The puncher needs to be attached along with the Staple Finisher-G1 or Booklet Finisher-G1 and brings punching capabilities to register 2 punch holes on the output.

Price (w/o tax)
60,000 yen

2 × 680-Sheet Cassettes (Standard)

The standard paper cassettes provide a paper capacity of 680 sheets (64 g/m²) per cassette.

Stack Bypass (Standard)

The stack Bypass provides a paper capacity of 80 sheets (64 g/m²).

Paper Deck Unit-B2

It can be installed on the right side of the Main Unit, holding up to 3,000 A4-sized sheets (64 g/m²), to meet volume printing needs.

Price (w/o tax)
230,000 yen

Cassette Feeding Unit-AF1

It provides a paper capacity of 680 sheets (64 g/m²) per cassette, supporting mixed-size printing to improve productivity.

Price (w/o tax)
150,000 yen

* This photo shows the imageRUNNER ADVANCE 4045F model with the Cassette Feeding Unit-AF1, Booklet Finisher-G1, Buffer Path Unit-H1, External 2 Hole Puncher-B2, and Paper Deck Unit-B2 attached.

Finisher

Staple Finisher-G1

Provide a 50-sheet staple capacity (64 g/m²), supporting corner and double stapling.

Price (w/o tax)
250,000 yen

Inner Finisher-D1

Can be installed in the central output section of the Main Unit, requiring no additional installation space. Provide a 50-sheet staple capacity (64 g/m²), supporting corner and double stapling.

Price (w/o tax) 120,000 yen

Built-In 2 Hole Puncher-A1

The built-in 2 Hole puncher can be mounted on the Inner Finisher-D1.

Price (w/o tax) 50,000 yen

* The photo shows the iR-ADV4045 with the Inner Finisher-D1, Built-In 2 Hole Puncher-A1, and Inner Finisher Additional Tray-A1 (Price (w/o tax) 20,000 yen) attached.

Inner 2 Way Tray-H1

The Inner 2 Way Tray-H1 brings a two-way paper output system to the basic configuration of the imageRUNNER ADVANCE Series, to sort output.

Price (w/o tax)
10,000 yen

Pedestal/Caster

iR-ADV Pedestal-B1

The pedestal provides space to store paper stocks at the bottom of the Main Unit.

Price (w/o tax) 50,000 yen

iR-ADV Caster-B1

The caster allows for device operation in a seated position.

Price (w/o tax) 30,000 yen

Main unit pricing (w/o tax)

4045 1,650,000 yen
4045F 1,750,000 yen

4035 1,450,000 yen
4035F 1,550,000 yen

4025 1,200,000 yen
4025F 1,300,000 yen

Built-in Service Technician Tools

The imageRUNNER ADVANCE Series provides the following built-in service technician tools designed for prompt delivery of required services when trouble occurs. Service technicians use these tools upon customer's assent.

- Service Technician Browser: Accesses the device web portal and views troubleshooting and countermeasure examples and other relevant information at a customer site.
- Updater: Downloads the latest firmware over the Internet at a customer site.

●Design and specifications are subject to change without notice, due to product improvements. The contents of this brochure are based on the design and specifications as of December, 2012. ●The pricing does not include photosensitive unit and consumables pricing as well as the corresponding consumption tax for each accessory. Consumption taxes will be added when you purchase the main unit, optional accessories, or consumables or when you ask your service technician for assistance. ●Maintenance services are required at regular intervals. Ask your sales representative for costs and consumables pricing. ●Performance components which are part of required maintenance services will be kept in store for a minimum of 7 years after the product went out of production. (Performance components are components required to maintain product performance.) ●Microsoft, Windows, and Windows Vista are registered trademarks of Microsoft Corporation in the United States and other countries. ●Macintosh, Mac, AppleTalk, iPad, and iPhone are trademarks of Apple Inc., registered in the U.S. and other countries. ●Adobe, PostScript, PostScript3 are either registered trademarks or trademarks of Adobe Systems Incorporated in the United States and/or other countries. ●IPX/SPX is a trademark of Novell, Inc. ●Canon, the Canon logo, imageRUNNER, Satera, and imageWARE are registered trademarks of Canon Inc. ●BMLinkS is the registered trademark of the Japan Business Machine and Information System Industries Association. ●All other trademarks are the property of their respective owners. Copy samples provided in this brochure may differ from actual output. ●Screenshots provided in this brochure are edited.

Warning:
●Possession of copies may be subject to punishment for violation of the law. These include:
① Currencies in circulation within and outside this country, government securities, and government and regional bond certificates
② Unissued postal stamps and postcards
③ Duplicated government stamps
●Copying copyrighted material, such as books, music, paintings, block prints, maps, movies, drawings, or photos, is prohibited except for personal, family, or other limited use.
●A designated administrator is required for management and control of this product to prevent unauthorized copying.



For product information,



Canon Marketing Japan Corporate Information (English)

canon.jp/8060e



To use the product safely:

- Before using the product, read the product documentation carefully and thoroughly.
- Use the product only within the specified output power and input voltage.



- Purchase Canon products at our store that you can always trust.